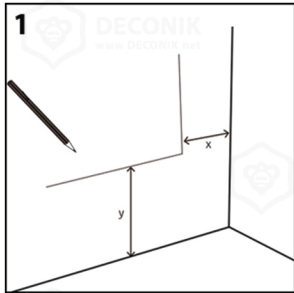
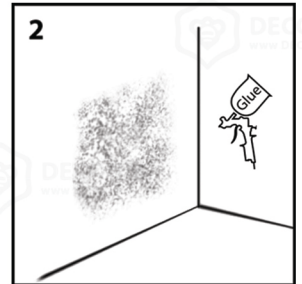
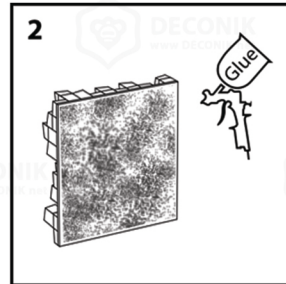
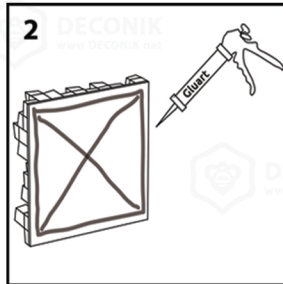


Installation guide

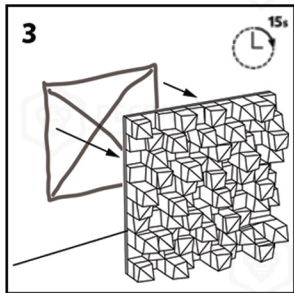
—Tools You Will Need



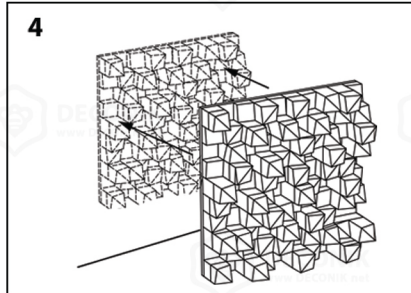
1-First clean the installation location (**wall or roof**) as to cleared the dust



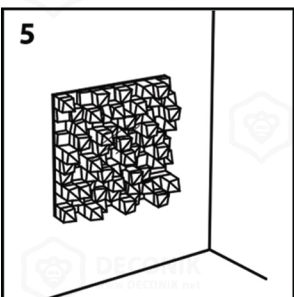
2-Apply glue back of the panel



3-Wait for 10 to 15 minutes



4-Install panel after accurate measurement



5-Push the panel to contact glue with desired location

Use styrofoam adhesive for monolithic panels.
Otherwise it will cause the panel to corrode and out of warranty.

برای پنل های یونولیتی از چسب مخصوص یونولیتی استفاده شود.
درغیر اینصورت باعث خوردگی پنل می شود و خارج از گارانتی می باشد.



DECONIK
COMMERICAL
GROUP

ACOUSTIC
PANEL
PRODUCTION



www.Deconik.net

