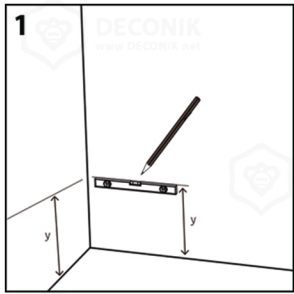
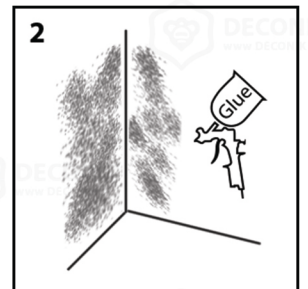
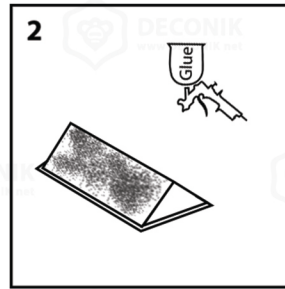
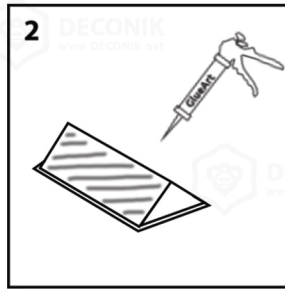


Installation guide

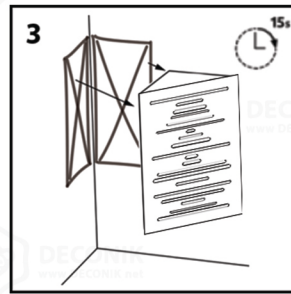
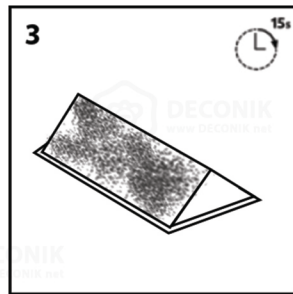
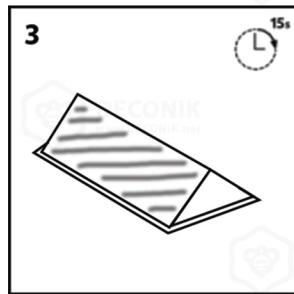
—Tools You Will Need



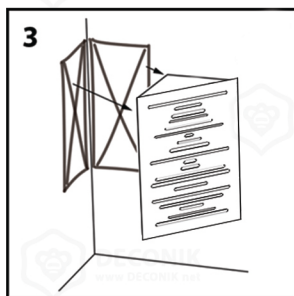
1-First clean the installation location (**wall or roof**) as to cleared the dust



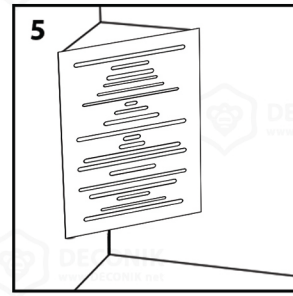
2-Apply glue back of the panel



3-Wait for 10 to 15 minutes



4-Install panel after accurate measurement



5-Push the panel to contact glue with desired location



DECONIK
COMMERICAL
GROUP

ACOUSTIC
PANEL
PRODUCTION



www.Deconik.net

